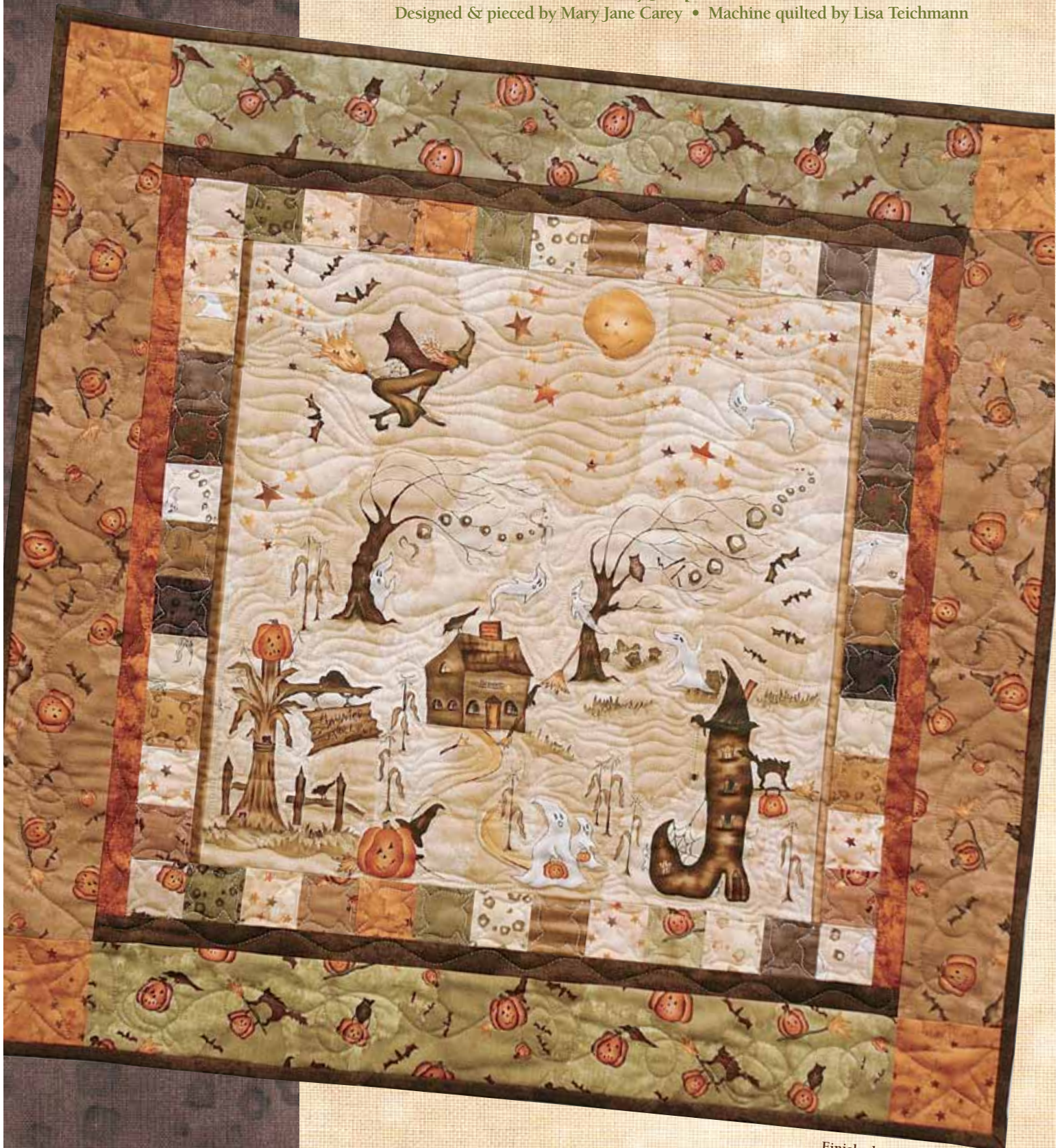
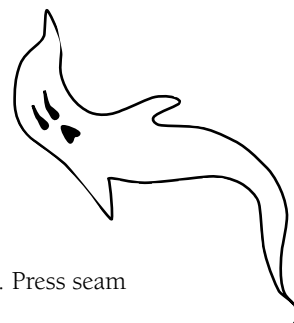


The Haunted Hall

Fabric by Jacqueline Paton
Designed & pieced by Mary Jane Carey • Machine quilted by Lisa Teichmann





FABRIC REQUIREMENTS:

Pattern #19014 – BE11	1 panel
19019 – DKBRO1	3/8 yard
(includes 1/4 yard binding)	
19019 – RUS1	1/8 yard
19018 – TAN1	1/4 yard
19018 – OL11	1/4 yard
19016 – LTBE11	fat eighth
19016 – GOL1	fat eighth
19017 – BE11	fat eighth
19017 – YEL1	fat eighth
19017 – ORA1	fat eighth
19018 – BE11	fat eighth
19018 – BRO1	fat eighth
19020 – LTBE11	fat eighth
19020 – LTBRO1	fat eighth
19020 – LTOL11	fat eighth
19020 – TAN1	fat eighth
19021 – DKBRO1	fat eighth
19021 – DKOL11	fat eighth
19021 – GOL1	fat eighth
19021 – LTBE11	fat eighth
19021 – LTOL11	fat eighth
19021 – OL11	fat eighth
Backing of choice	1 yard
Batting	33" x 33"

CUTTING INSTRUCTIONS:

Cut fabrics in order given.

A. Pattern #19014 – BE11 (panel):

1. Trim panel to 17" x 17". Note: Panel frame will show on sides only. Label A.

B. Pattern #19019 – RUS1 (texture):

1. *Cut two 1 1/4" x 20" strips for second border. Label B.

C. Pattern #19019 – DKBRO1 (texture):

1. *Cut two 1 1/4" x 21 1/2" strips for second border. Label C.
2. Cut three 2 1/2" x 42" strips for binding.

D. Pattern #19018 – TAN1 (pumpkins):

1. *Cut two 3 1/2" x 21 1/2" strips third border. Label D.

E. Pattern #19017 – ORA1 (stars):

1. Cut four 3 1/2" squares for third border. Label E.

F. Pattern #19018 – OL11 (pumpkins):

1. *Cut two 3 1/2" x 21 1/2" strips for third border. Label F.

G. From remaining fabric and fat eighths:

1. Cut forty-eight 2" squares.

***TIP:** Before cutting borders B, C, D, & E, measure your square. You may find your personal measurement is different. Cut all these borders slightly longer than your measurement. Sew on each pair of borders and resquare.



©2009 Red Rooster Fabrics. All rights reserved.
Not intended for individual resale.

PIECING INSTRUCTIONS: Use 1/4" seam allowances.

This project is a medallion-style quilt created by adding a series of borders to a center block.

A. First Border:

1. Sew together two sets of eleven 2" squares in random order. Press.
2. Sew pieced border to the top and bottom of the panel. Press seam toward (A).
3. Sew together two sets of thirteen 2" squares in random order. Press.
4. Sew pieced border to both sides of the panel. Press seam toward (A).

B. Second Border:

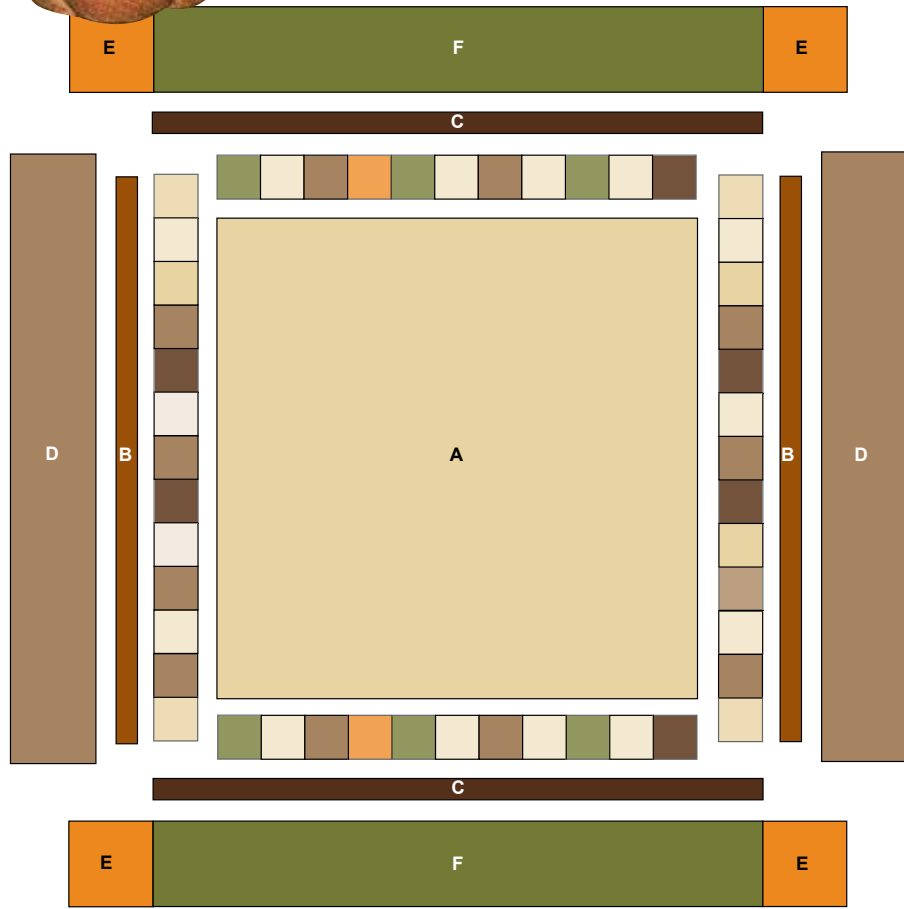
1. Sew (B) border to both sides; press toward border.
1. Sew (C) border to the top and bottom; press toward border.

C. Third Border:

1. Sew (D) border to both sides; press toward border.
2. Sew (E) square to both ends of each (F) border; press toward border.
3. Sew completed (F) border to the top and bottom of quilt; press toward border.

FINISHING:

1. Prepare the backing to measure 33" x 33".
2. Layer quilt top, batting, and backing. Baste layers together.
3. Quilt as desired.
4. Trim the batting and backing even with the quilt top.
5. Join binding strips with diagonal seams. Press seams open. Apply binding using your favorite method.



Quilt Diagram

The design for this Red Rooster Fabrics' pattern is protected by U.S. copyright law. Quilt stores: for additional copies of this pattern please call or write Red Rooster Fabrics at the address listed below.

253 West 35th Street, 11th Floor, New York, NY 10001
401.728.4200 • www.redroosterfabrics.com

We take great care to ensure that the information included in our free pattern is accurate and presented in good faith. No warranty is provided nor results guaranteed. For your convenience, we post an up-to-date listing of corrections on our website: <http://www.redroosterfabrics.com/quilt/oops.php>

If a correction is not noted, please contact our customer service department at info@redroosterfabrics.com. You may also call or write us at the address listed.