

Charlotte



Finished quilt size: 68½" x 68½"

Quilt design and piecing by June Pease. Machine quilting by Jackie Kunkel.



Fabric from the "Charlotte" collection by Red Rooster Fabrics.

FABRIC REQUIREMENTS

Pattern: 15307 BEI1 ¼ yard, medium triangles
15307 WIN1 ¼ yard, medium triangles
15307 SAG1 ¼ yard, medium triangles
15307 CRE1 1¾ yards, large triangles
15308 WIN1 2⅞ yards, outer border
15309 WIN 1 ⅓ yard, small dark triangles
15309 OLI 1 ⅞ yard, small dark triangles
and binding

Pattern: 15310 SAG 1 ¼ yard, small light triangles
15310 PIN 1 ¼ yard, small light triangles
15311 GRE 1 ⅓ yard, small dark triangles
15311 BEI 1 5 yards, backing and sleeve
15312 PIN 1 ⅓ yard, small dark triangles
15313 RED 1 1⅔ yards, inner border
15384 GOL 1 ⅓ yard, background block
15384 PIN 1 ⅓ yard, background block
Batting..... 75" x 75"

CUTTING INSTRUCTIONS *Cut fabrics in order given.*

A. Pattern 15307 BEI1 (large floral):

1. Cut one 6⅞" x 42" strip. Crosscut into four 6⅞" squares; cut once on the diagonal. Use 8 for medium triangles.

B. Pattern 15307 WIN1 (large floral):

1. Cut one 6⅞" x 42" strip. Crosscut into four 6⅞" squares; cut once on the diagonal. Use 8 for medium triangles.

C. Pattern 15307 SAG1 (large floral):

1. Cut one 6⅞" x 42" strip. Crosscut into five 6⅞" squares; cut once on the diagonal. Use 9 for medium triangles.

D. Pattern 15307 CRE1 (large floral):

1. Cut five 10⅞" x 42" strips. Crosscut into thirteen 10 7/8" squares; cut each square once on the diagonal. Use 25 triangles for blocks.

E. Pattern 15308 WIN1 (border stripe):

1. Cut four strips 8" x length of fabric along selvage edge of fabric for outer border.

F. Pattern 15309 WIN1 (tone-on-tone):

1. Cut three 2⅞" x 42" strips. Crosscut into thirty-two 2⅞" squares for small dark triangles.

G. Pattern 15309 OLI1 (tone-on-tone):

1. Cut two 2⅞" x 42" strips. Crosscut into twenty-eight 2⅞" squares for small dark triangles.
2. Cut eight 2½" x 42" strips for binding.

H. Pattern 15310 SAG1 (small leafy fabric):

1. Cut two 2⅞" x 42" strips. Crosscut into eighteen 2⅞" squares for small light triangles.

I. Pattern 15310 PIN1 (small leafy fabric):

2. Cut two 2⅞" x 42" strips. Crosscut into eighteen 2⅞" squares for small light triangles.

J. Pattern 15311 GRE1 (medium floral):

1. Cut one 2⅞" x 42" strip. Crosscut into fourteen 2⅞" squares for small dark triangles.

K. Pattern 15311 BEI1 (medium floral):

1. Cut two 8½" x 42" strips for sleeve.
2. Backing, 75" x 75" (see Finishing).

L. Pattern 15312 PIN1 (small rose floral):

1. Cut one 2⅞" x 42" strip. Crosscut into fourteen 2⅞" squares for small dark triangles.

M. Pattern 15313 RED1 (wavy stripe):

1. Cut four strips 2¼" x length of fabric along selvage edge for inner border.

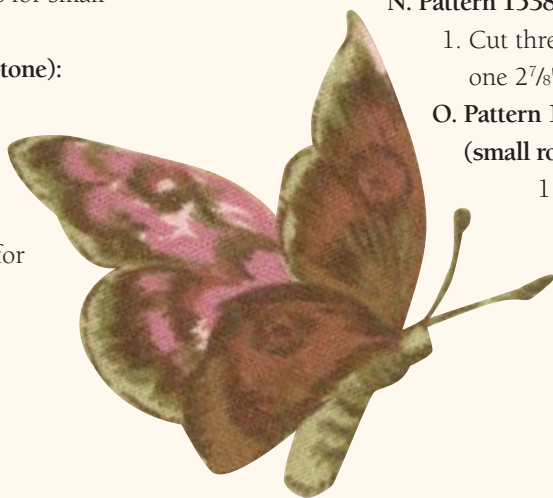
N. Pattern 15384 GOL1 (small rose with beige ground):

1. Cut three 2⅞" x 42" strips. Crosscut into forty-one 2⅞" squares for small light triangles.

O. Pattern 15384 PIN1

(small rose with beige ground):

1. Cut three 2⅞" x 42" strips. Crosscut into thirty-six 2⅞" squares for small light triangles.



PIECING INSTRUCTIONS

A. Block Construction: Make 25 Blocks – 8 large floral Beige, 8 large floral Wine, and 9 large floral Sage.

Finished Size: 10" x 10"

1. Draw a diagonal line on the wrong side of eighty-eight of the $2\frac{7}{8}$ " light background squares as shown in Figure 1.

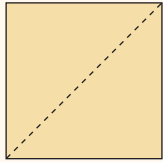


Figure 1

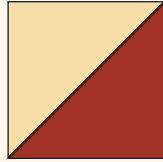


Figure 2

2. Place a dark $2\frac{7}{8}$ " square right sides together with a light $2\frac{7}{8}$ " square. Sew a one-quarter inch seam allowance on each side of drawn diagonal line. Cut apart on drawn line. Press. See Figure 2. Yield: 176 half-square triangle blocks.
3. Cut twenty-five $2\frac{7}{8}$ " light squares once on the diagonal. Use two triangles in each of the 25 blocks.
4. Assemble the block: refer to Figure 3.

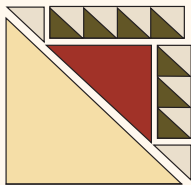
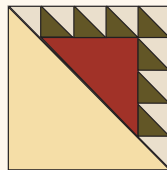


Figure 3

- a. Sew three half-square triangle blocks and one small light triangle. Press.
- b. Sew the unit to the short side of a medium triangle. Press.
- c. Sew together four half-square triangle blocks and one small light triangle. Press.
- d. Sew the unit to the opposite short side of the medium triangle. Press.
- e. Sew the large floral triangle to the pieced unit to complete the block. Press.

QUILT ASSEMBLY

1. Join the blocks together, in rows of five blocks each, alternating the block colors as shown in Figure 4. Press seams in opposing directions for each row.
2. Sew all rows together. Press seams.



3. Inner Border: Mark the center of each inner border strip and the center of each side of the quilt. Sew a $2\frac{1}{4}$ " inner border stripe to each side of the quilt matching marked centers. Miter each corner using your favorite method.



4. Outer Border: Mark the center of each outer border strip and the center of each side of the quilt. Sew an 8" outer border strip to each side of the quilt matching marked centers. Miter each corner using your favorite method.

FINISHING

1. Prepare backing to measure 75" x 75". Press seam open.
2. Layer quilt top, batting, and backing. Baste layers together. Hand or machine quilt as desired.
3. Join binding strips with diagonal seams. Press seams open. Apply binding using your favorite method.
4. Make a hanging sleeve from the two $8\frac{1}{2}$ " x 42" strips and attach to the top of the back of the quilt.

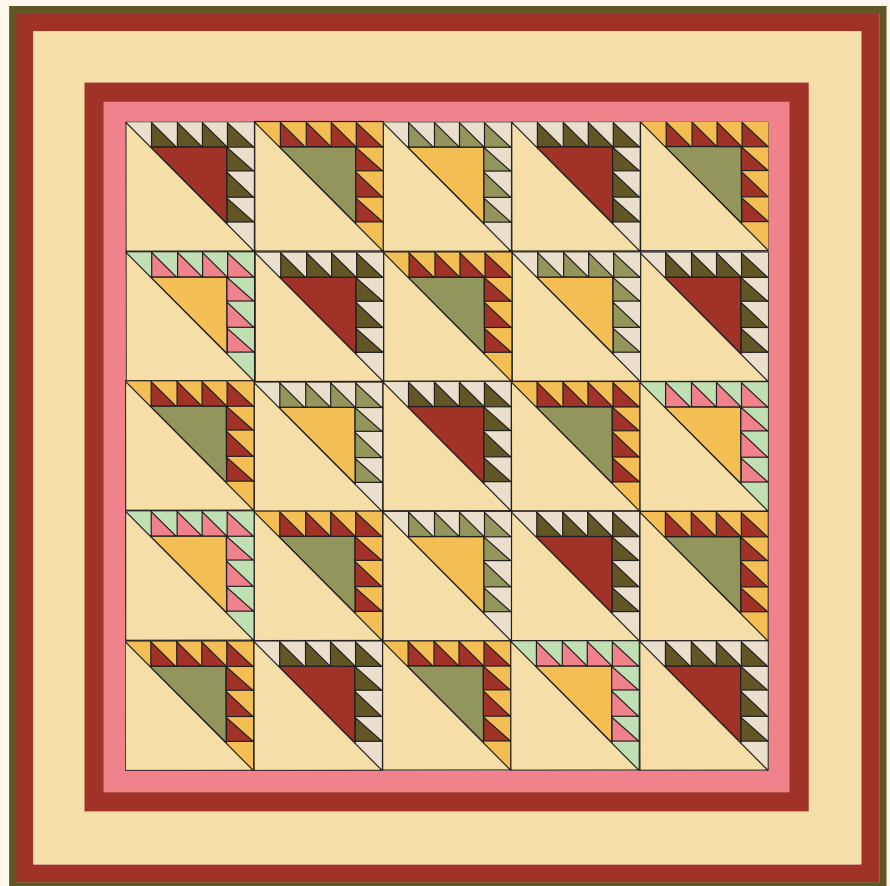
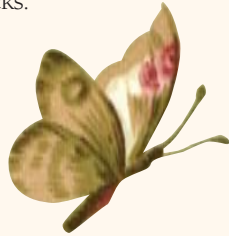
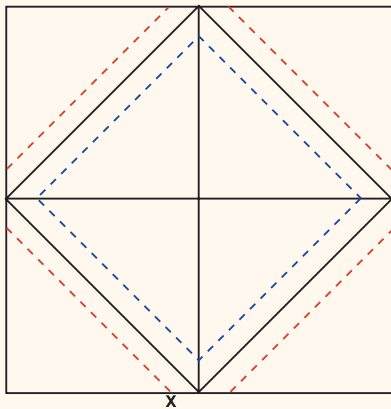


Figure 4

QUICK QUILT TIP...

Another way to make half-square triangle units.

An alternative way to make multiple half-square triangle units accurately is with the use of a grid, as shown. The formula for half-square triangle units is: Finished size of triangle plus $\frac{7}{8}$ " ($2" + \frac{7}{8}" = 2\frac{7}{8}"$ for Charlotte.)



Grid drawn on paper.

Draw a grid of four squares, each square measuring $2\frac{7}{8}" \times 2\frac{7}{8}"$. Accuracy is important. Mark a solid line from diagonal point to diagonal point creating a diamond shape within the square. Draw a $\frac{1}{4}"$ sewing line on each side of the solid diagonal line, as shown. Keep this drawing as your original and make 25 copies, one grid for each block. Each grid will give you 8 half-square triangle units – you will use 7 per block for this pattern.

Cut two pieces of fabric, a background and a dark, no smaller than $6\frac{1}{2}"$ square. Place the fabric right sides together, with the gridded paper pinned in place on top. Using a short stitch length (14-16 stitches per inch) and the presser foot with the grooved line in the center, begin stitching at the X along the red broken sewing line. Align the groove of the presser foot with the sewing line. Continue stitching without breaking the thread until you have sewn along the red sewing line and blue sewing line. With the stitching complete, cut apart accurately on **all the solid lines** using your rotary cutter and ruler. Pull the paper off the back. Press seams toward the dark fabric. Your half-square triangle unit now measures $2\frac{1}{2}"$.

ABOUT THE DESIGNER... June Pease

June began quilting in 1978, taking instruction from a local teacher. She had always enjoyed art and sewing and combined them with some original ideas to begin her 28-year tenure as quilter, designer, and teacher. Years of retail consulting have permitted her to balance the artistic and commercial aspects of her craft.

June's teaching opportunities have been self-initiated, in support of local guilds, and through a variety of retail quilting and fabric outlets. As an academically trained teacher and enthusiastic quilter, she is able to create lively, informative classes that appeal to a broad audience-young and old, contemporary and traditional.

Appliqué and geometric piecework find their way equally into her work. Known for her variety of patterns, June is best appreciated for the creative uses of fabric and colors within the domain of commercially available patterns. Occasional but outstanding creative works round out a truly exceptional portfolio.

June exhibits and consistently ribbons in guilds in New Hampshire and Vermont and since 1990 at the annual Vermont Quilt Festival. She garnered special recognition at the East Coast Quilter's Alliance - A Quilter's Gathering 2001, where she was awarded the Publisher's Award from *The Quilter Magazine*. Her creations have been offered through the League of New Hampshire Craftsmen and Keepsake Quilting as well as many local craft outlets. Starry Night, June's popular holiday creation, was exhibited at the New England Quilt Museum in Lowell, Massachusetts. In her first North Carolina exhibitions June received Best of Show for one of her signature appliqué works "In Celebration: A Marriage" and Judges Choice for the Roseville Appliqué at the 2004 Dixie Classic Fair.

Examples of June's work can be found in *Free Style Quilts* by Susan Carlson and *Sky Dyes* by Mickey Lawler, both available through C&T Publishing. June's creation "Elm Leaves and Lilacs" graces the cover and is a featured pattern in Jennifer Chiaverini's latest pattern book, *Return to Elm Creek* (Fall 2005), currently available through C&T Publishing as well as in quilt shops. June is also a Quilt Consultant and Designer for Red Rooster Fabrics of New York City. *The Quilter Magazine*, Summer 2003, featured her Garden Steps quilt, designed for Red Rooster Fabrics. *Designer's Quarters*, Spring 2005, featured her Mary Frances and Thimble Friends quilt, and *McCall's Quilting*, Spring, 2005, featured her English Trellis quilt which used Red Rooster's Floral Fancy fabric collection.



© 2006 Red Rooster Fabrics. All rights reserved. Not intended for individual resale.

The design for this Red Rooster Fabrics' pattern is protected by U.S. copyright law. For additional copies of this pattern please call or write Red Rooster Fabrics at the address listed below.

Red Rooster Fabrics, 1359 Broadway, Suite 1202, New York, NY 10018 • Telephone 401.728.4200