



Meri Penguins

Quilt by Lisa Moore of Quilts with a Twist



Finished size of quilt: 66" x 93"

FABRIC REQUIREMENTS:

Pattern #17730 – BLU1.....	1 yard
17731 – BLU1.....	2 ³ / ₄ yards
17732 – RED1.....	1/2 yard
17732 – DKBLU1.....	1/2 yard
17733 – RED1.....	1/2 yard
17733 – DKBLU1.....	1/2 yard
17734 – RED1.....	2 1/3 yards
17734 – DKGRE1.....	1 1/3 yards
17735 – LTRED1.....	5/8 yard
17736 – RED1.....	1/4 yard
17736 – DKBLU1.....	1/4 yard
17737 – BLU1.....	1/2 yard
Backing (your choice).....	5 3/4 yards
Batting.....	72" x 99"

Optional Supplies:

Hot Fix Swarovski® crystals (3mm) – 200 each of green, red and crystal opalescent.
Hot Fix Applicator wand for crystals.

CUTTING INSTRUCTIONS: See back page for organizational tip.

A. Pattern #17730 – BLU1 (penguin stripe):

1. Top – Cut two identical 7 1/2" stripes along the length of the fabric (36" long by approximately 7 1/2"). Cut so that the bottom is 1/4" below the dark stripe.
2. Bottom – Cut two identical 6 1/2" stripes along the length of the fabric (36" long by approximately 6 1/2"). Cut so that the top is 1/4" above the green stripe. Refer to the cover photo to determine where to fussy cut the stripes - my goal was to position the white dots on red at the top of the top stripe and the bottom of the lower stripe.

B. Pattern #17731 – BLU1 (main focal):

1. Cut one 28 1/2" x 42" strip. Crosscut the center rectangle, 14 1/2" x 28 1/2".
2. From the remaining width, cut four 5" x 26" strips. Crosscut twenty 5" squares.
3. Cut eight 7 1/2" x 42" strips. Crosscut thirty-six 7 1/2" squares.

C. Pattern #17732 – RED1 (C1) and DKBLU1 (C2) (penguin toss):

1. Cut two 7 1/2" x 42" strips from each color. Crosscut eight 7 1/2" squares from each.

D. Pattern #17733 – RED1 (D1) and DKBLU1 (D2) (tree toss):

1. Cut two 7 1/2" x 42" strips from each color. Crosscut six 7 1/2" squares from each.

E. Pattern #17734 – RED1 (stars):

1. Cut four 5" x 42" strips. Crosscut fourteen 5" x 9 1/2" rectangles.
2. Cut four 5" squares from remaining 5" strip.
3. Cut seven 2" x 42" strips (inner border).
4. Cut eight 3" x 42" strips (outer border).
5. Cut eight 2 1/2" x 42" strips (binding).

F. Pattern #17734 – DKGRE1 (stars):

1. Cut eight 5" strips. Crosscut twenty-two 5" x 9 1/2" rectangles.
2. Cut sixteen 5" squares from remaining 5" strips.

G. Pattern #17735 – LTRED1 (narrow stripe):

1. Cut two 5" x 42" strips. Crosscut sixteen 5" squares.
2. Cut seven 1 1/4" x 42" strips (middle border).

H. Pattern #17736 – RED1 (H1) and DKBLU1 (H2) (check):

1. Cut one 7 1/2" x 42" strip from each color. Crosscut four 7 1/2" squares from each.

I. Pattern #17737 – BLU1 (snow):

1. Cut three 5" x 42" strips. Crosscut twenty 5" squares.

PIECING INSTRUCTIONS:

This quilt uses a technique of folded half-square triangles and flying geese units with the bias edge topstitched, and then folded back to form the curves. All seams are 1/4" unless noted. Press all seams toward the darker fabric.

I. Quilt Center (make one)

Press four 5" squares of green star fabric (F2) on the diagonal, wrong sides together, and pin them on the corners of the center rectangle (B1). Stitch a curved line on top as shown in Figure 1, Detail 1. Fold back along the stitched line. Topstitch (Detail 2). Trim away the lower two layers of fabric.

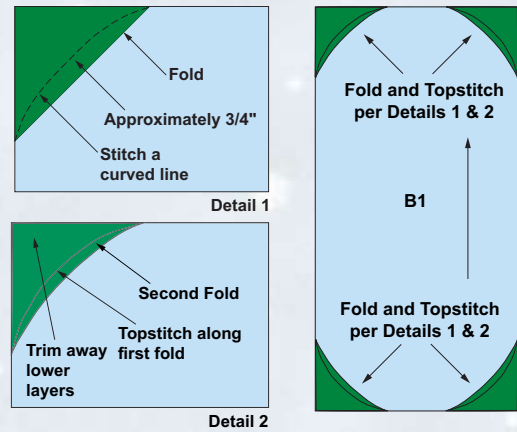


Figure 1

Finished size 14" x 28": make one.

II. Left Side Unit (four rows)

Use the same technique to add curved corners to the 7 1/2" squares listed below. Fold, topstitch, and trim (Details 1 and 2).

Fabric list (see cutting instructions):

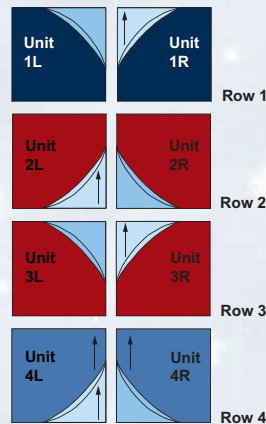


Figure 2

- 1L: blue tree toss (D2), blue snow (I1)
- 1R: blue tree toss (D2), main focal (B2)
- 2L, 3R: red penguins (C1), main focal (B2)
- 2R, 3L: red penguins (C1), blue snow (I1)
- 4L: blue check (H2), main focal (B2)
- 4R: blue check (H2), blue snow (I1)

Note: The main focal and blue check fabrics are directional - place them in the correct orientation before sewing.

1. Left Side Unit Assembly:

1. Use the 5" x 9 1/2" rectangles of green star fabric (F1) between the blocks of Rows 1 and 2 to make curved flying geese units (Figure 3).

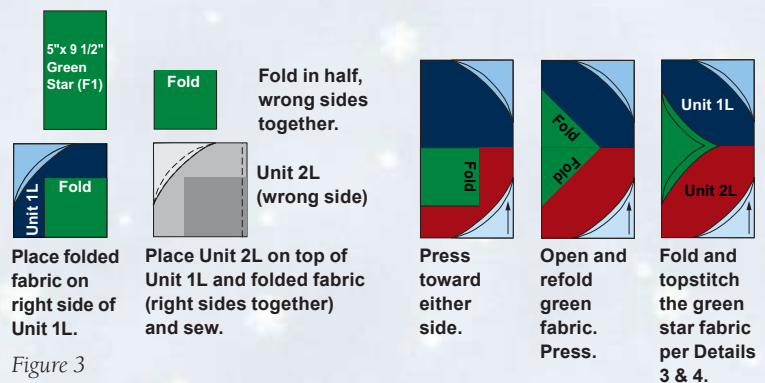


Figure 3

Detail 3: Sew a curved line as in Detail 1. Stop 1/4" in from fold at center. Pivot, and repeat curve.

Detail 4: Topstitch as in Detail 2. Trim away the lower two layers of fabric.

Caution - Be very careful when cutting - it is easy to nick the top fabric.

- b. Repeat for Units 1R, 2R; Units 3L, 4L; and Units 3R, 4R (Figure 4).
- c. Sew units 1L/2L to 1R/2R and 3L/4L to 3R/4R. Sew rows 1 and 2 to rows 3 and 4 (Figure 5).

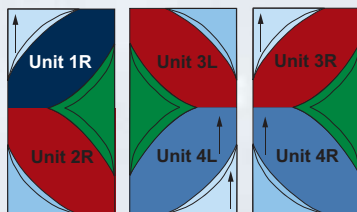


Figure 4

III. Right Side Unit (four rows)

1. Repeat the directions for the Left Side Unit to construct the Right Side Unit (Figure 6).

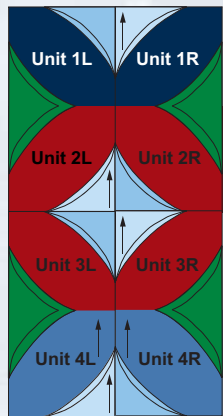


Figure 5

Left Side Unit: make one.

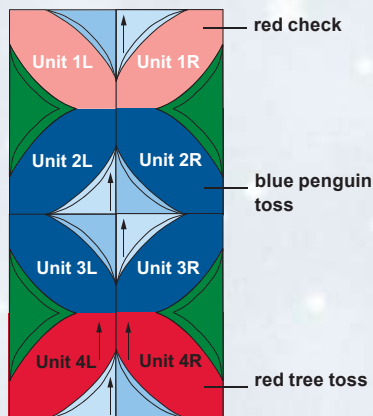


Figure 6

Right Side Unit: make one.

IV. Top Unit (two rows)

Refer to Details 1 and 2 to make the Top Unit (Figure 7). Use the curved flying geese technique (Details 3 and 4) between Units 3 and 4 and between Units 9 and 10.

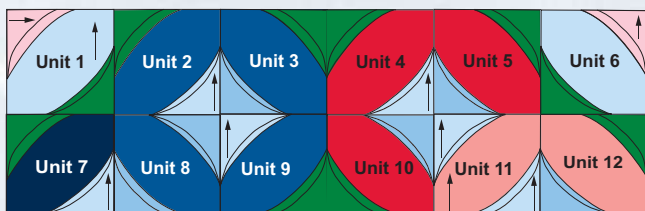


Figure 7 Top Unit: make one.

Fabric list for Top Unit:

- Units 1 & 6: B3, F2, G1 (note direction of stripe)
 Unit 2: C2, F2, B2
 Unit 3: C2, F1, I1 (shared with Unit 4)
 Unit 4: D1, B2, F1
 Unit 5: D1, F2, I1
 Unit 7: D2, F2, B2
 Unit 8: C2, I1, I1
 Unit 9: C2, B2, F1 (shared with Unit 10)
 Unit 10: D1, I1, F1
 Unit 11: H1, B2, B2
 Unit 12: H1, I1, F2

V. Bottom Unit (two rows)

Refer to Details 1 and 2 to make the Bottom Unit (Figure 8). Use the curved flying geese technique (Details 3 and 4) between Units 15 and 16 and between Units 21 and 22.

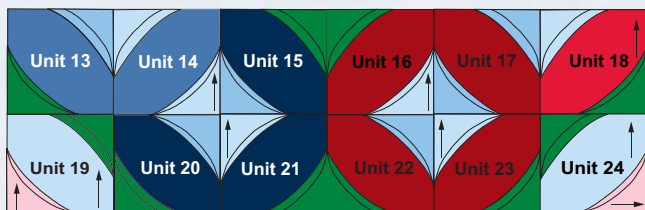


Figure 8 Bottom Unit: make one.

Fabric list for Bottom Unit:

- Unit 13: H2, F2, I1
 Unit 14: H2, B2, B2
 Unit 15: D2, I1, F1 (shared with Unit 16)
 Unit 16: C1, B2, F1
 Unit 17: C1, I1, I1
 Unit 18: D1, B2, F2
 Units 19 and 24: B3, F2, G1 (note direction of stripe)
 Unit 20: D2, F2, I1
 Unit 21: D2, B2, F1 (shared with Unit 22)
 Unit 22: C1, I1, F1
 Unit 23: C1, B2, F2



VI. Pieced Borders

1. Use the same techniques as before to make the borders (Figure 9). The curved flying geese technique (Details 3 and 4) is used between all of the units. Sew units together in pairs with a red curved flying geese unit (E1) between them.
2. Sew these paired units together with a green curved flying geese unit (F1) between them.
3. The striped corners and red corners are accomplished the same as shown in Details 1 and 2.

Note: Make certain that all fabrics have the correct orientation.

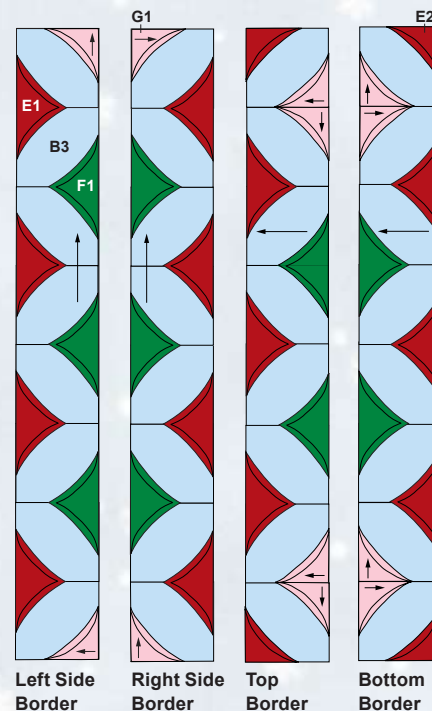


Figure 9 Make one of each.

REMAINING BORDERS:

1. Sew the seven 2" strips (E3) end-to-end.
2. Repeat for the eight 3" strips (E4).
3. Repeat for the seven 1 1/4" strips (G2).
4. Fussy cut and piece the two 7 1/2" strips of border stripe (A1) by turning under one end of the border stripe and matching the pattern to the other piece of border stripe. Pin in place and sew.
5. Fussy cut and piece the two 6 1/2" strips of border stripe (A2).

QUILT ASSEMBLY:

Referring to Quilt Diagram, sew pieces in the following order:

1. Add Side Units and then Top and Bottom Units to the Quilt Center. Add Pieced Borders, sides first, and then top and bottom.

Note: For remaining side borders, measure the length of the quilt down the middle. Cut two strips equal to the length of the quilt and stitch to the sides of the quilt. For remaining top and bottom borders, measure the width of the quilt across the middle. Cut two strips equal to the width of the quilt and stitch to the top and bottom of the quilt.

2. Sew the 2" borders (E3) to the sides, and then top and bottom of the quilt center.
3. Sew the 1 1/4" borders (G2) to the sides, and then top and bottom of the quilt center.
4. Sew the 3" borders (E4) to the top and bottom of the quilt center.
5. Sew the 7 1/2" border stripe (A1) to the top of the quilt.
6. Sew the 6 1/2" border stripe (A2) to the bottom of the quilt.
7. Sew the remaining 3" border strips (E4) to the sides of the quilt.

FINISHING:

1. Backing: Prepare backing fabric, with vertical seams, to measure 72" x 99". Press seams open.
2. Layer quilt top, batting, and backing.
3. Baste layers together.
4. Hand or machine quilt as desired. I outlined and echoed the curves.
5. Join the binding strips with diagonal seams. Attach binding using your favorite method.
6. Make a hanging sleeve (optional) and a label. Attach to the back of the quilt.
7. Optional:
I applied 3mm hot fix crystals as follows:
 - a. Green crystals to the curved green areas and on some of the tree tops in the center panel.
 - b. Red crystals to the striped areas in the corners, along the red striped border, and a few on the center panel.
 - c. Opalescent crystals on the center panel. Sprinkle the remaining crystals wherever you like to add sparkle to the quilt.

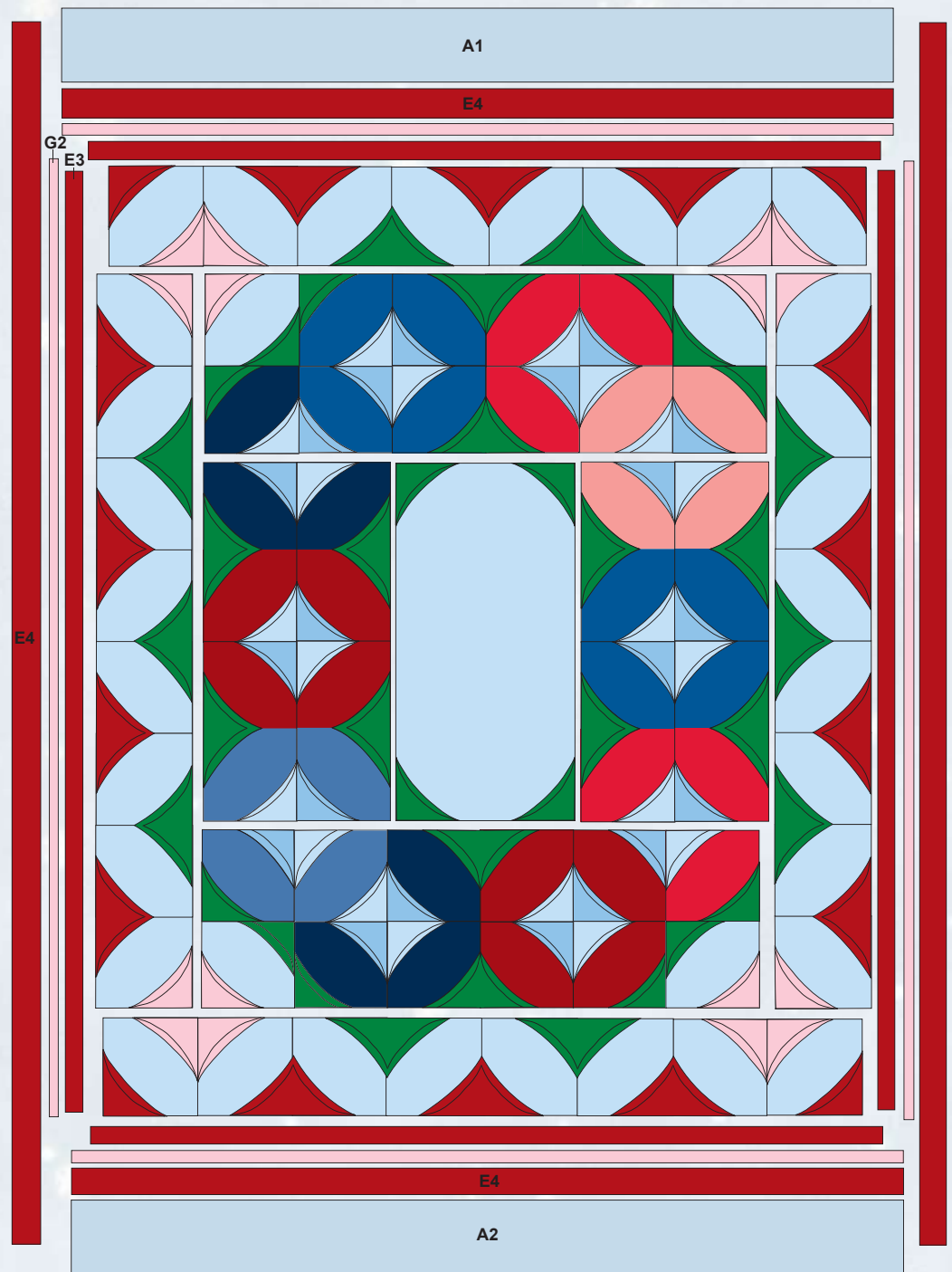
Tips for applying hot fix crystals:

1. Most applicator wands take about 2 minutes to heat up – make certain it is fully heated before starting. Always keep the unit on a resting stand when you're not using it. Be careful of the tip. It is very hot!
2. I like to use the small, flat head attachment – it sits on top of the crystal and allows you to fix the crystal in place, instead of heating the crystal on the tip and moving it to the fabric.
3. Work on a clean, hard, heat resistant surface – I use my ironing board.
4. Use tweezers to position the crystals where you want them on your quilt, glue side down.
5. Place the heat tool on top of the crystal with a slight, steady pressure. Hold for 5-10 seconds. Crystals may be re-positioned, if necessary, while the glue is still hot.
6. Check to make sure the crystal has completely adhered. If not, just re-heat until secure.

Organizational Tip:

The letter and number in parenthesis refers to the cutting instructions. As you cut the fabric, I recommend labeling each stack using masking tape (example: A1).

This is the order that you will be using the fabrics – place them in this order: F2, B1, D2, I1, B2, C1, H2, F1, B3, G1, C2, D1, H1, E1, E2, G1, E3, E4, G2, A1, A2, E5.



Quilt Diagram



©2008 Red Rooster Fabrics. All rights reserved. Not intended for individual resale. The design for this Red Rooster Fabrics' pattern is protected by U.S. copyright law.

For additional copies of this pattern please call or write Red Rooster Fabrics at the address listed below.
253 West 35th Street, 11th Floor, New York, NY 10001 • 401.728.4200 • www.redroosterfabrics.com