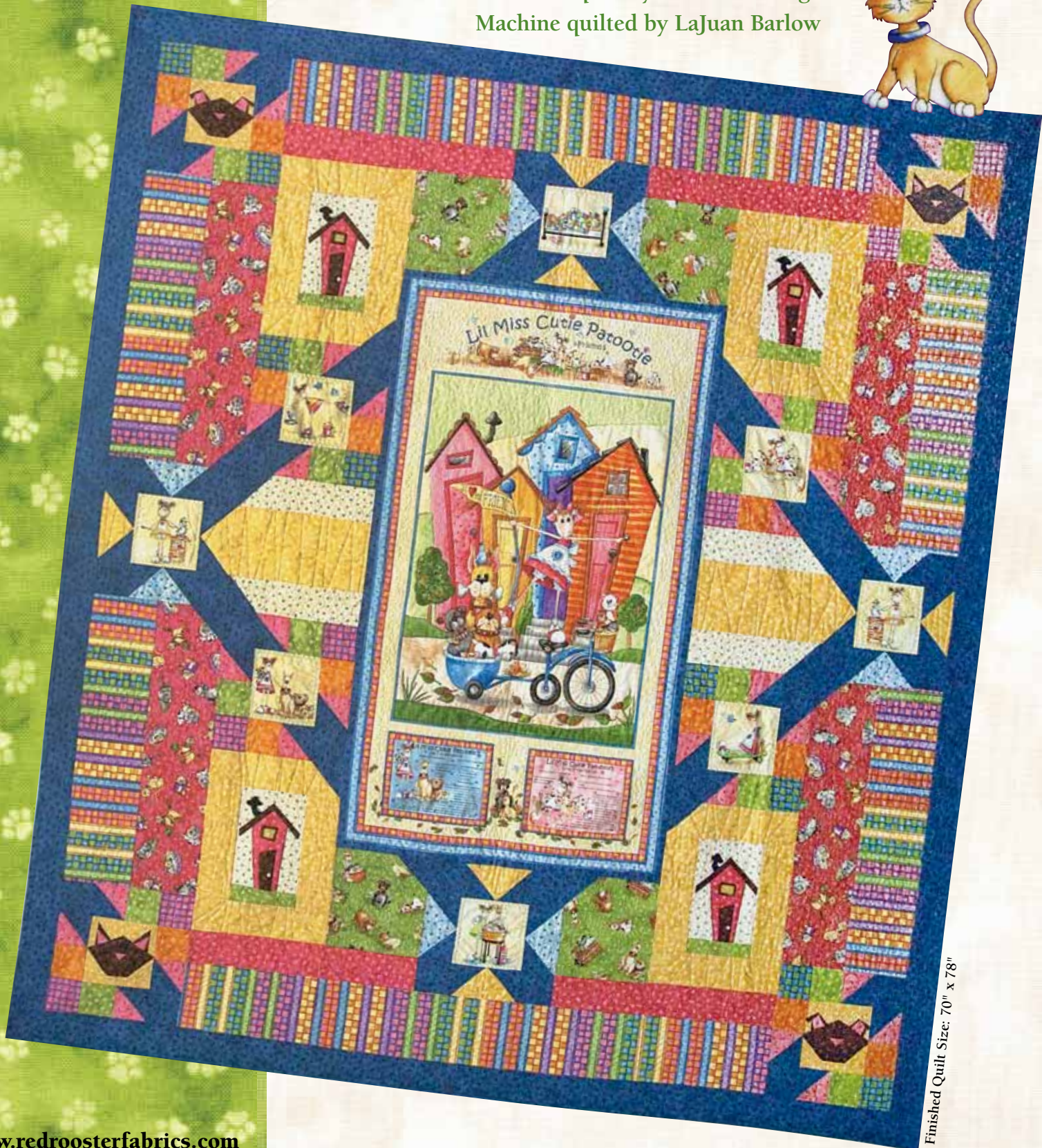


Lil Miss Cutie Patootie

Fabric and quilt by Desiree's Designs
Machine quilted by LaJuan Barlow



Finished Quilt Size: 70" x 78"

FABRIC REQUIREMENTS:

Pattern #21006 – MUL1	1 panel 24"
21007 – YEL1	(2) complete rows/approximately $\frac{3}{8}$ yard
21011 – BLU1	27 $\frac{7}{8}$ yards
21011 – MEDGRE1	$\frac{1}{4}$ yard
21011 – LTORA1	$\frac{1}{4}$ yard
21011 – PIN1	$\frac{1}{3}$ yard
21011 – DKBRO1	$\frac{1}{4}$ yard
21011 – YEL1	$\frac{7}{8}$ yard
21013 – LTBLU1	$\frac{1}{4}$ yard
21013 – LTGRE1	$\frac{3}{8}$ yard
21013 – PIN1	$\frac{1}{4}$ yard
21012 – BLU/GRE1	$\frac{1}{8}$ yard
21012 – PIN/PUR1	$\frac{1}{8}$ yard
21008 – MUL1	1 $\frac{1}{8}$ yards
21009 – GRE1	$\frac{1}{4}$ yard
21010 – RED1	$\frac{3}{4}$ yard
Tokyo: 12615 – BLA1	$\frac{1}{8}$ yard
Backing of choice	5 yards
Batting	78" x 86"

Additional supplies: $\frac{1}{2}$ yard fusible web for house block.

CUTTING INSTRUCTIONS:

Please read all instructions carefully before beginning. $\frac{1}{4}$ " seam allowance is included in measurements and all strips are cut across the width of the fabric unless noted otherwise. Cut fabrics in order given.

A. Pattern #21006 – MUL1 (panel, Fabric A)

1. If necessary, square panel by pulling on the bias and press. Center and cut panel to 22" x 40".

B. Pattern #21007 – YEL1 (Cutie Patootie squares, Fabric B)

1. Center and cut eight $5\frac{1}{2}$ " x $5\frac{1}{2}$ " squares.

C. Pattern #21011 – BLU1 (dark blue paws, Fabric C)

1. Cut six 3" strips; subcut eighty 3" squares (32 for $10\frac{1}{2}$ " block corners, 32 for flying geese, 16 for corner angles).
2. Cut two $3\frac{3}{8}$ " strips, subcut sixteen $3\frac{3}{8}$ " squares for the half-square-triangle units.
3. Cut four 3" strips; subcut two 3" x 27". All strips are used for frames around panel.
4. Cut eight $3\frac{1}{2}$ " strips for outer border.
5. Cut as many $2\frac{1}{2}$ " bias strips as needed to equal 310" for binding.

D. Pattern #21011 – MEDGRE1 (green paws, Fabric D)

1. Cut two 3" strips; subcut sixteen 3" squares to use in $10\frac{1}{2}$ " blocks. Use remaining fabric for the grass in the appliqué house blocks.

E. Pattern #21011 – LTORA1 (orange paws, Fabric E)

1. Cut two 3" strips; subcut sixteen 3" squares to use in $10\frac{1}{2}$ " blocks.

F. Pattern #21011 – PIN1 (pink paws, Fabric F)

1. Cut three 3" strips; subcut four 3" x $10\frac{1}{2}$ " rectangles and four 3" x $7\frac{1}{2}$ " rectangles for the houses in the appliqué blocks.

G. Pattern #21011 – DKBRO1 (dark brown paws, Fabric G)

1. Use for paper piecing the cat and dog blocks and the doors and roofs of the house blocks.

H. Pattern #21011 – YEL1 (yellow paws, Fabric H)

1. Cut one $5\frac{1}{2}$ " strip; subcut two $5\frac{1}{2}$ " x $10\frac{1}{2}$ " rectangles.
2. Cut four 3" strips; subcut eight 3" x $10\frac{1}{2}$ " rectangles and eight 3" x 9" rectangles to frame house blocks.
3. Cut three 3" strips; subcut eight 3" x $5\frac{1}{2}$ " rectangles to make flying geese triangles. Use remaining fabric for the background of paper pieced dog and cat squares.

I. Pattern #21013 – LTBLU1 (blue dots, Fabric I)

1. Cut two 3" strips; subcut eight 3" x $5\frac{1}{2}$ " rectangles for flying geese.

J. Pattern #21013 – LTGRE1 (green dots, Fabric J)

1. Cut two 3" strips; subcut four 3" x $10\frac{1}{2}$ " rectangles.
2. Cut one $5\frac{1}{2}$ " strip; subcut four $5\frac{1}{2}$ " x 10" rectangles (background for house blocks.)

K. Pattern #21013 – PIN1 (pink dots, Fabric K)

1. Cut two $3\frac{3}{8}$ " strips; subcut sixteen $3\frac{3}{8}$ " squares.
2. Use remaining fabric for inside ears/nose of dog and cat blocks.

L. Pattern #21012 – BLU/GRE1 (blue and green check, Fabric L)

1. Cut one 3" strip; subcut eight 3" squares.

M. Pattern #21012 – PIN/PUR1 (pink and purple check, Fabric M)

1. Cut one 3" strip; subcut eight 3" squares.

N. Pattern #21008 – MUL1 (multicolored stripe, Fabric N)

1. Cut six $5\frac{1}{2}$ " strips; subcut four $5\frac{1}{2}$ " x $21\frac{1}{2}$ " rectangles, four $5\frac{1}{2}$ " x $10\frac{1}{2}$ " rectangles, and two $5\frac{1}{2}$ " x $24\frac{1}{2}$ " rectangles.

O. Pattern #21009 – GRE1 (green tossed dogs, Fabric O)

1. Cut one $7\frac{1}{2}$ " strip; subcut four $7\frac{1}{2}$ " x $8\frac{1}{2}$ " rectangles.

P. Pattern #21010 – RED1 (red tossed cats, Fabric P)

1. Cut one $21\frac{1}{2}$ " strip; subcut four $5\frac{1}{2}$ " x $21\frac{1}{2}$ " rectangles.

PIECING INSTRUCTIONS:

Panel Center and Small Block Assembly:

These instructions are for the panel center and assembling the smaller blocks which you will use to make the larger $10\frac{1}{2}$ " blocks.

A. Panel Center:

1. Sew the longer 3"-wide fabric C strips (dark blue paws) to sides of panel. Press toward strips and trim ends even with panel. Repeat using 3" x 27" strips for top and bottom of panel.
2. Square panel to $24\frac{1}{2}$ " x $44\frac{1}{2}$ ".

B. Paper pieced Dog and Cat blocks:

1. Use #21011 – DKBRO1, #21013 – PIN1 and #21011 – YEL1. Make two copies of each of the dog and cat paper piecing patterns. Sew two of the paper pieced cats and two of the paper pieced dog blocks following the numbered guide. Trim to $5\frac{1}{2}$ " x $5\frac{1}{2}$ ". If you don't want to paper piece these blocks, you can substitute additional $5\frac{1}{2}$ " Lil Miss Cutie Patootie squares, fabric B.

C. House blocks:

1. Use #21011 – PIN1, #21013 – LTGRE, #21011 – MEDGRE1, #21011 – DKBRO1, #21007 – YEL1 and #12615 – BLA1 and your favorite appliqué method. Trace reversed images of house pattern onto fusible web. Rough cut around shapes and fuse onto wrong side of desired fabrics. Cut out each piece on the drawn line. Arrange pieces on background fabric and fuse in place. Applique using the stitch of your choice. Square blocks to $5\frac{1}{2}$ " x 9". Sew the 3" x 9" yellow paws strips, fabric H to sides of blocks. Following directions in step E below, sew a dark blue 3" square, fabric C on one corner of four 3" x $10\frac{1}{2}$ " yellow paw rectangles, fabric H. Refer to quilt diagram for placement of these triangles. Sew the 3" x $10\frac{1}{2}$ " strips to the top and bottom of the house block, referring to the quilt diagram for placement.

D. Half-square triangles:

1. Using sixteen $3\frac{3}{8}$ " C squares (dark blue paws) and sixteen $3\frac{3}{8}$ " K squares (pink dots), place right sides together, align edges. Draw a diagonal line from corner to corner on back of top fabric. Then, draw a line $\frac{1}{4}$ " from each side of the center line (Figure 1). These will be your sewing lines. Repeat on all squares. Chain sew together on each side of line and then cut down center line and press open. You will now have thirty two half-square-triangle blocks.

Draw a line. Stitch. Cut. Press. Trim and square up.



Figure 1

E. Red cat strips:

1. Draw a diagonal line on the wrong side of four 3" fabric C squares. Referring to Figure 2, position a C square on the upper left corner of two fabric P strips, right sides together. Stitch on the drawn line. Trim to $\frac{1}{4}$ " seam. Press open. Repeat with the two remaining fabric P strips, except position the C squares on the upper right corner of the strips.

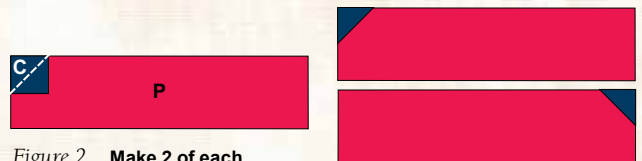


Figure 2 Make 2 of each.

F. Horizontal side blocks:

1. Sew one of the green dot, fabric J, 3" x $10\frac{1}{2}$ " strips to the top and bottom of each fabric H, yellow paw, $5\frac{1}{2}$ " x $10\frac{1}{2}$ " strip.

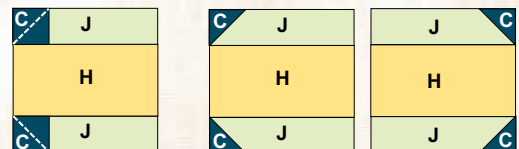


Figure 3 Make 1 of each.

Following directions for the red cat strips, sew two C squares to the J/H/J units as shown in Figure 3. Trim and press open.

G. Green dog blocks:

1. Referring to the quilt diagram, sew 3" x 7 1/2" fabric F rectangle pink paws to the correct top and bottom of the green dog fabric O rectangles.
2. Following directions in step E, sew a dark blue 3" square, fabric C on one corner of each of the 7 1/2" x 8 1/2" green dog rectangles, fabric O. Refer to diagram for placement of these triangles.

H. Flying geese:

1. Make sixteen flying geese units. Make eight using fabrics C and H (dark blue paws, yellow paws), make eight using fabrics C and I (dark blue paws and blue dots). Draw a diagonal line across thirty-two fabric C squares. Align a fabric C square on one end of a fabric H or I 3" x 5 1/2" rectangle. Sew on drawn line. Trim 1/4" seam allowance. Open and press. Repeat on opposite ends. Blocks should measure 3" x 5 1/2".



Figure 4

I. Large 10 1/2" Blocks:

1. Make four blocks with paper-pieced centers, two following the dog layout, and two following the cat layout below. Make four with center B squares following the frames of dog and cat block layout.

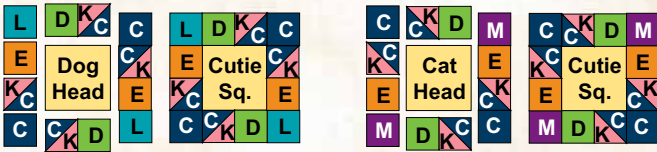


Figure 5 Make 2 each of block shown above.

2. Make four Lil Miss Cutie Patootie blocks in the "X" format as follows:

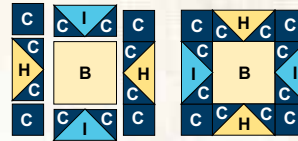


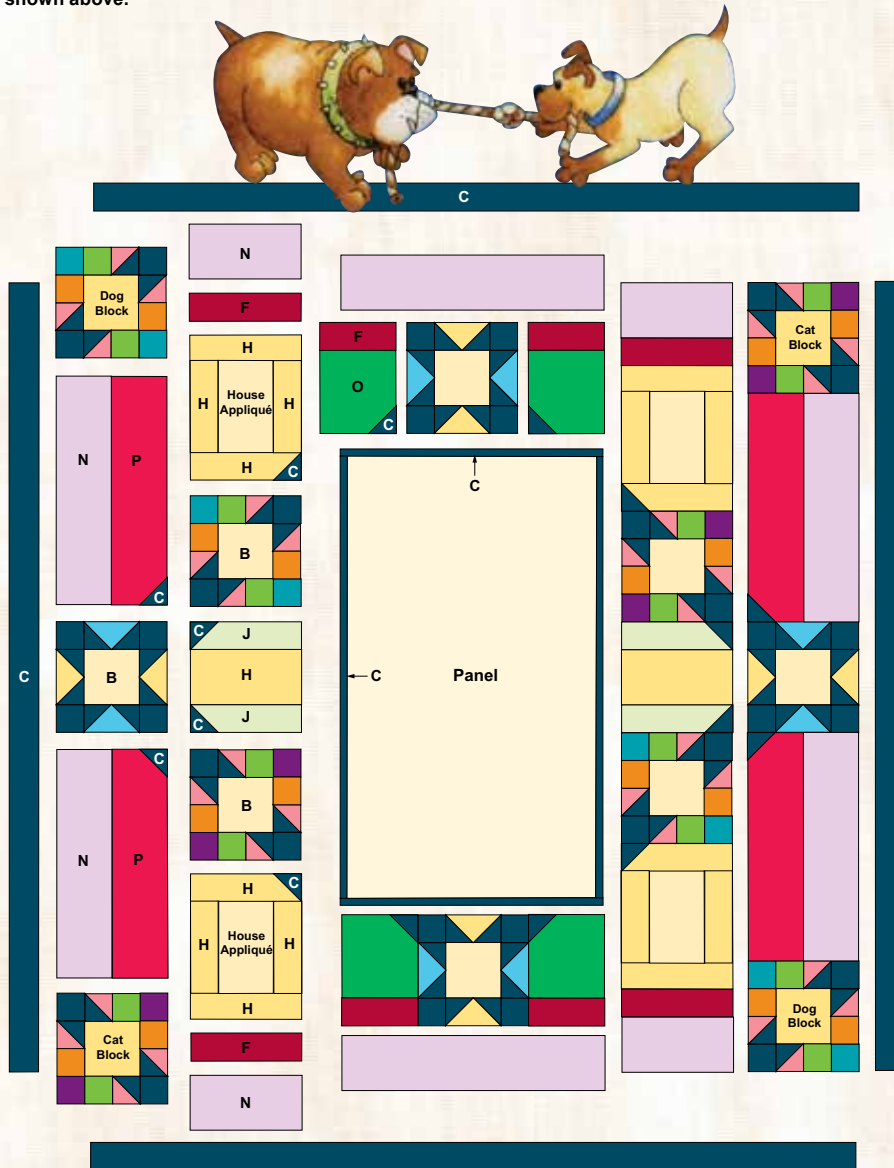
Figure 6 Make 2 of each.

QUILT ASSEMBLY:

- A. Sew a 3" x 10 1/2" pink paws fabric F rectangle to each of the 5 1/2" x 10 1/2" multicolored stripe fabric N. Sew these to the top of two house blocks and the bottom of two house blocks. Sew together fabric P tossed cat fabric, and the fabric N multicolored stripe, lengthwise as shown in quilt diagram.
- B. Referring to diagram, layout the appropriate blocks and panel A into five columns. Sew all units and blocks together into vertical rows. Then join the rows together. Sew together eight 3 1/2" dark blue paw strips, fabric C, end to end and press. Measure quilt and cut this fabric into strips for outer border. Sew and press toward borders.
- C. Sample quilt uses eight small black buttons for the dog and cat eyes. Four small white buttons were used for the doorknobs on the house blocks.

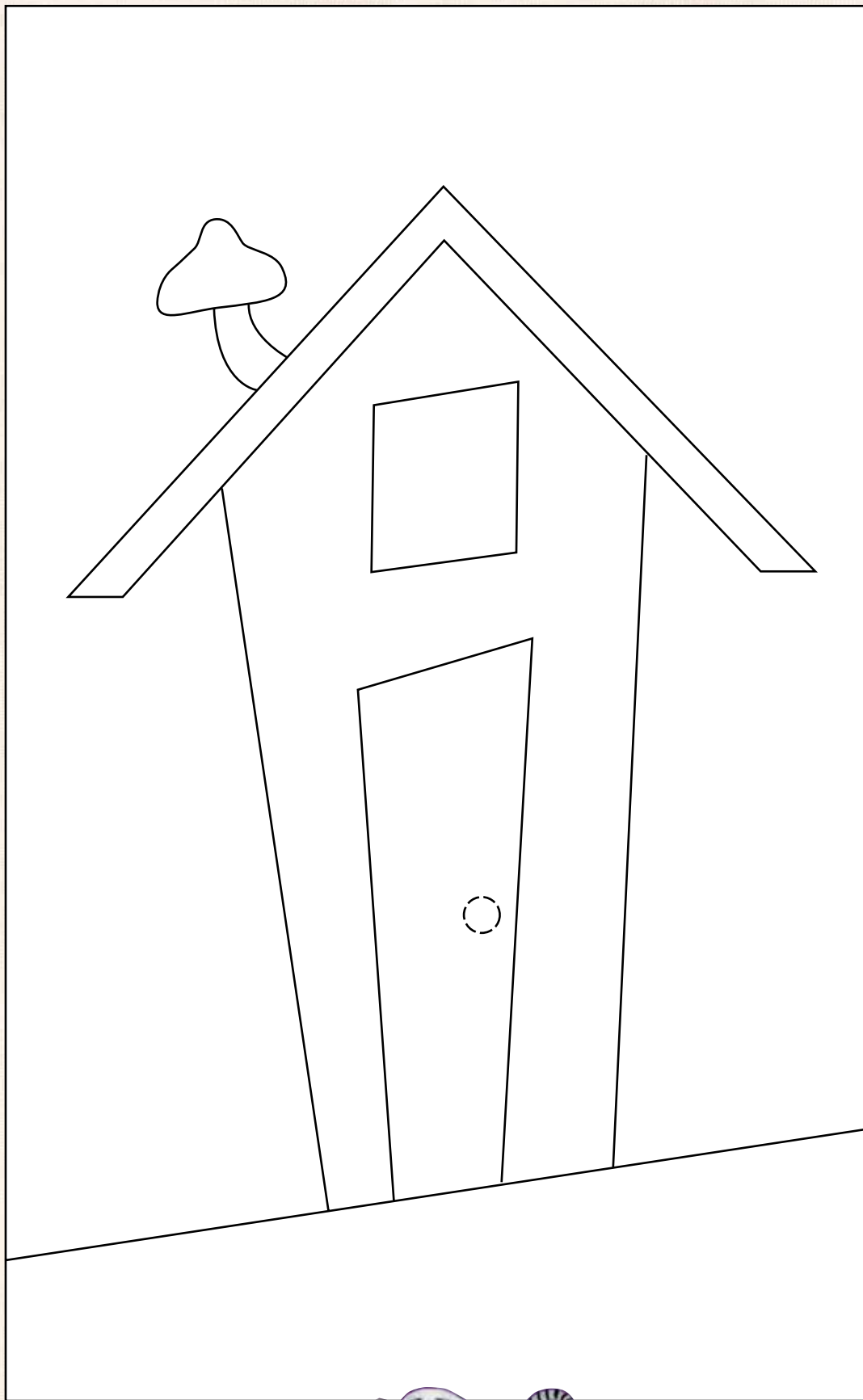
FINISHING:

- A. Prepare backing to measure 78" x 86".
- B. Layer quilt top, batting, and backing. Baste layers together.
- C. Quilt as desired.
- D. Trim the batting and backing even with quilt top.
- E. Join the binding strips with diagonal seams to equal 310". Press seams open. Apply binding using your favorite method.



House Appliqué
100%
Make four.

To match direction
of house blocks in
quilt, you will need
to reverse image
before tracing onto
fusible web.



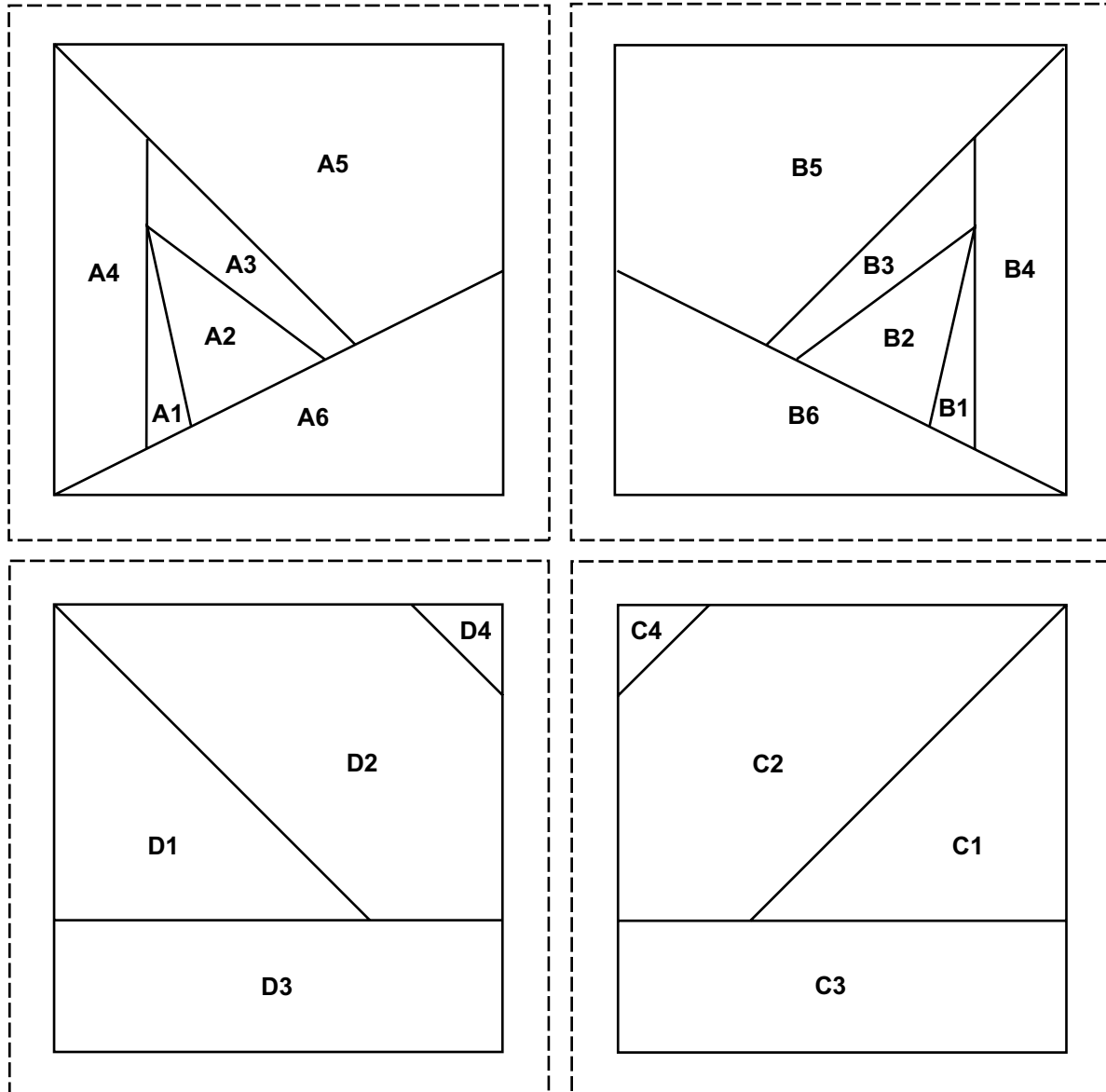
©2010 Desiree's Design for Red Rooster Fabrics. All rights reserved. Not intended for individual resale.

The design for this Red Rooster Fabrics' pattern is protected by U.S. copyright law.
Quilt stores: for additional copies of this pattern please call or write Red Rooster Fabrics at the address listed below.
253 West 35th Street, 11th Floor, New York, NY 10001 • 401.728.4200 • www.redroosterfabrics.com

We take great care to ensure that the information included in our free pattern is accurate and presented in good faith. No warranty is provided nor results guaranteed. For your convenience, we post an up-to-date listing of corrections on our website: <http://www.redroosterfabrics.com/quilt/oops.php> If a correction is not noted, please contact our customer service department at info@redroosterfabrics.com. You may also call or write us at the address listed.

Lil Miss Cutie Patootie

Paper-pieced Cat Template



Make 2 copies at 100% for quilt blocks

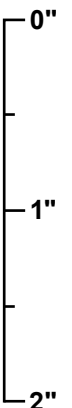
Pattern #21011 – YEL1 (yellow paws): A4, A5, B4, B5, C1, C3, D1, D3

Pattern #21011 – DKBRO1 (brown paws): A1, A3, A6, B1, B3, B6, C2, D2

Pattern #21013 – PIN1 (pink dots): A2, B2, C4, D4

Scale Check for pdf files

When you print these templates, this ruler should measure 2 inches long. If it does not, change "page scaling" to "none" in the print dialog box.

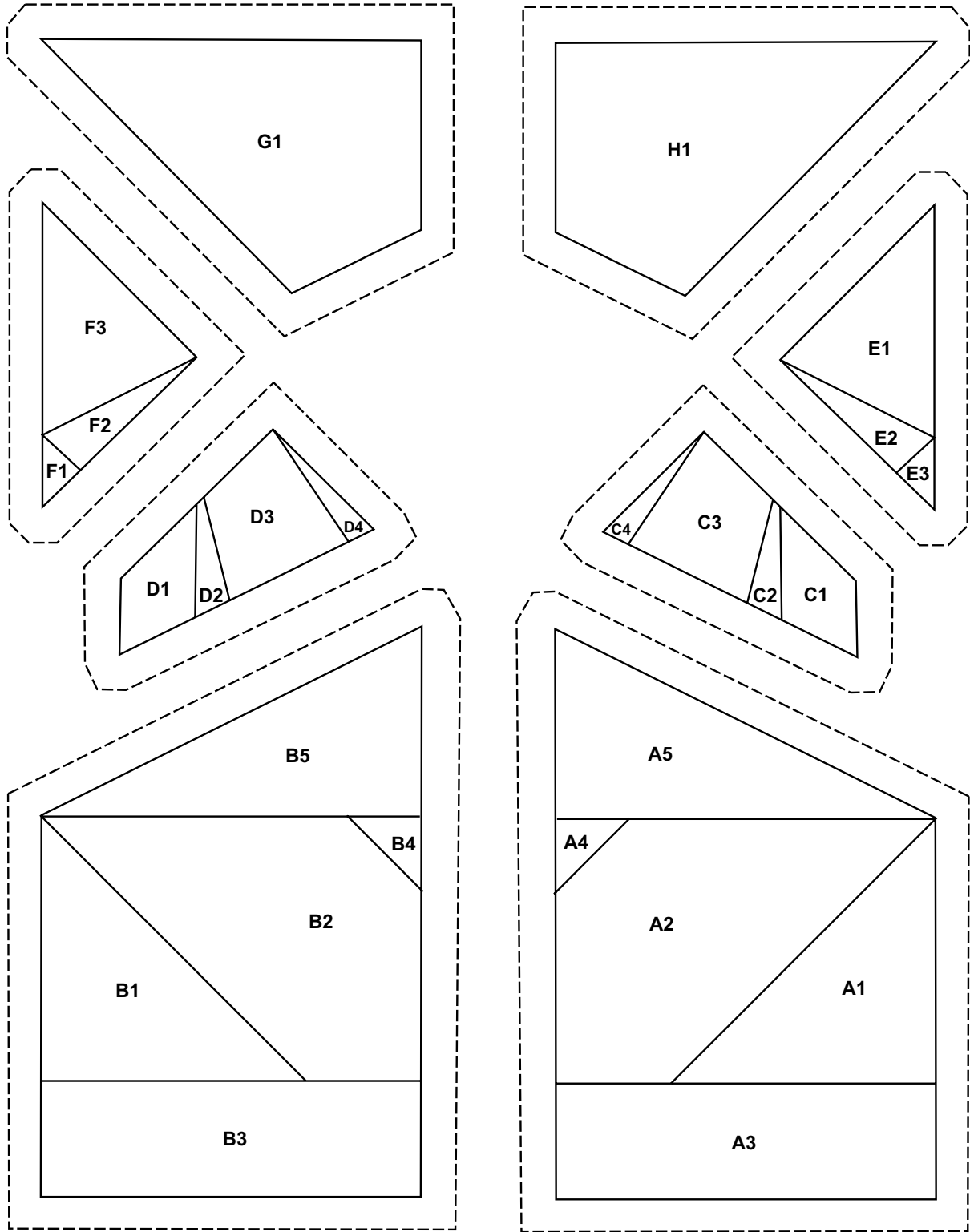


©2010 Desiree's Design for Red Rooster Fabrics. All rights reserved. Not intended for individual resale.

The design for this Red Rooster Fabrics' pattern is protected by U.S. copyright law.
 Quilt stores: for additional copies of this pattern please call or write Red Rooster Fabrics at the address listed below.
 253 West 35th Street, 11th Floor, New York, NY 10001 • 401.728.4200 • www.redroosterfabrics.com

Lil Miss Cutie Patootie

Paper-pieced Dog Template



Make 2 copies at 100% for quilt blocks.

Pattern #21011 – YEL1 (yellow paws): A1, A3, B1, B3, C1, D1, E1, E3, F1, F3, G1, H1

Pattern #21011 – DKBRO1 (brown paws): A2, A5, B2, B5, C2, C4, D2, D4, E2, F2

Pattern #21013 – PIN1 (pink dots): A4, B4, C3, D3

Scale Check for pdf files
When you print these templates, this ruler should measure 2 inches long. If it does not, change, "page scaling" to "none" in the print dialog box.

