

Ricky Tims'
Rhapsodie Colorée II

Fabric design and quilt by Ricky Tims

Finished quilt size: 50" x 50"



FABRIC REQUIREMENTS:

Pattern #17062 – DKFUC1.....	4 1/8 yards*
17062 – PUR1	2 yards*
17063 – LIL1	2 3/4 yards
17063 – LTTUR1	1 1/4 yards
17063 – LIPS1	7/8 yard
17063 – FUC1	1 yard
17063 – FRBLU1	7/8 yard
Backing.....	3 1/4 yards
Batting.....	56" x 56"

*Yardage includes approximately 1/3 yard extra to allow for fussy cutting.

ADDITIONAL SUPPLIES:

Fusible Web (18" wide).....	4 1/4 yards
Stabilizer (18" wide).....	4 1/4 yards
Freezer paper	
Template plastic (optional)	
Threads in assorted colors for appliqué and quilting	
Chalk or removable marker	

For more detailed information on preparing and assembling your own Rhapsody-style quilt, see *Ricky Tims' Rhapsody Quilts* (C&T Publishing, Inc., 2007).

CUTTING INSTRUCTIONS:

Read all instructions carefully before you begin cutting.
Cut fabrics in order given.

1. Pattern #17063 – FRBLU1

- Cut 1 of background piece 1.

2. Pattern #17063 – LTTUR1

- Cut 4 each of background pieces 2 and piece 2 reverse.

3. Pattern #17062 – PUR1

- Cut 4 of background piece 3.*
- Cut 4 of appliqué design D.

4. Pattern #17063 – FUC1

- Cut 4 of background piece 4.

5. Pattern #17063 – LIL1

- Cut 4 of background piece 5.
- Cut 6 strips, 2 1/8" x 42" for binding.

6. Pattern #17062 – DKFUC1

- Cut 1 of appliqué design A.*
- Cut 4 of appliqué design C.*
- Cut 4 of appliqué design E.*

7. Pattern #17063 – LIPS1

- Cut 4 and 4 reverse each of appliqué design B.

* You may wish to fussy cut these pieces.

PREPARING THE BACKGROUND:

- Carefully cut out pattern pieces 1-5 directly on the marked outer lines. Use the patterns to create one freezer paper template for each piece. (You can reuse the freezer paper templates to cut any multiples needed.) You do not need to transfer the appliqué patterns (A-E) at this time; however, be sure to transfer all registration and grain line markings.
- Iron the cut-out freezer paper templates to the right side of your chosen fabrics and roughly cut out around the template edges (Figures 1a and 1b).

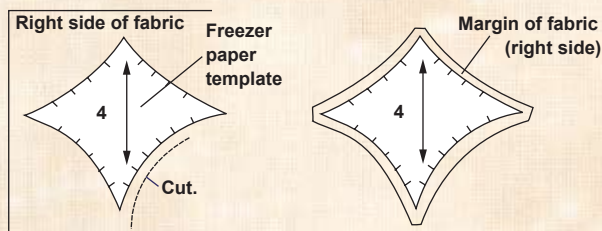


Figure 1a

Figure 1b

- Stay stitch around the outside edge of each template. Extend the registration marks into the surrounding fabric, avoiding the small margin between the edge of the template and the stay stitching (Figure 2).

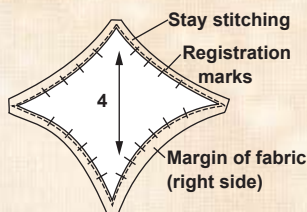


Figure 2

- Trim the seam allowances to a scant 1/4", and remove the freezer paper.
- Repeat steps B-D to prepare the required number of each background piece.
- Referring to the quilt diagram (Figure 3 on the following page), arrange the center piece (piece 1) and pieces 2, 2 reverse, 3, 4, and 5 on a design wall. Do not sew the pieces together yet.

RICKY'S TIPS FOR MACHINE APPLIQUÉ:

- Follow the manufacturer's instructions to adhere the fusible to the wrong side of your appliqué fabrics.
- Once you have transferred the patterns to the appliqué fabrics, use good, sharp scissors to cut out the appliqué right on the traced lines.
- Make sure the appliqué is properly oriented on the background shape before fusing.
- Match your bobbin and top thread if possible.
- Use a layer of stabilizer under the appliqué. This will stabilize the project and help you create smooth and beautiful stitches.
- Always make test samples on the fabric and stabilizer you plan to use to finalize your thread choices and experiment with stitch sizes.
- If your machine has the needle-down position, use it!



APPLIQUÉ INSTRUCTIONS:

There are many techniques for creating appliqué; use whatever method you enjoy. If you plan to hand appliqué, remember to add a 1/4" turnunder allowance when you cut the fabric pieces.

Ricky appliquéd the quilt shown with a raw-edge machine technique that utilizes fusible interfacing and various outline stitches, primarily a blanket stitch and double blanket stitch. He used contrasting thread (rayon, polyester, or silk) to outline the appliqués and to provide highlights and texture to the finished piece. Rather than being disguised or hidden, the stitching becomes an integral design feature that accentuates the appliquéd elements. This is the technique described in the steps below.

- A. Trace one each of appliqué pieces A-E from pattern pieces 1-5 onto template material or freezer paper to create templates for the appliqué patterns. (Again, you can reuse the freezer paper templates to cut any multiples needed.) Cut out the patterns by carefully cutting directly on the marked out lines.
- B. Use the templates, fusible web, and your chosen fabrics to prepare the required number of appliqué shapes, reversing any asymmetrical shapes as necessary.
- C. Referring to the appliqué placement diagram (Figure 4) and the photo on the pattern cover, fuse the appliqués on to the appropriate background pieces.
- D. Use a machine single or double blanket stitch and threads that contrast in color to the various appliqué fabrics to stitch around the edges of each appliqué shape.

QUILT ASSEMBLY:

- A. Referring to the quilt diagram (Figure 3) and working in numerical order from the appliquéd center (piece 1) outward, stitch the appliquéd 2 and 2 reverse pieces, 3 pieces, 4 pieces, and 5 pieces to complete the quilt top, aligning the stay stitching and registration marks and smoothing the curves as you go. Press.

FINISHING:

- A. Prepare backing fabric to measure 56" x 56".
- B. Layer quilt top, batting, and backing. Baste the layers together.
- C. Hand or machine quilt as desired.
- D. Trim the batting and backing even with the quilt top.
- E. Join the binding strips with diagonal seams. Use your favorite method to attach binding.

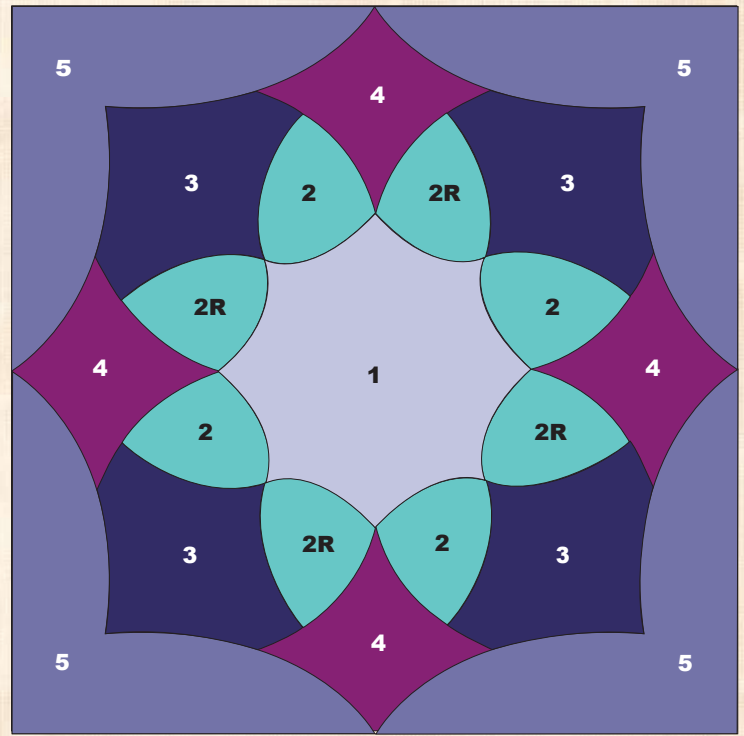


Figure 3



Figure 4



©2008 Ricky Tims. All rights reserved. Not intended for individual resale.

The design for this Red Rooster Fabrics' pattern is protected by U.S. copyright law.

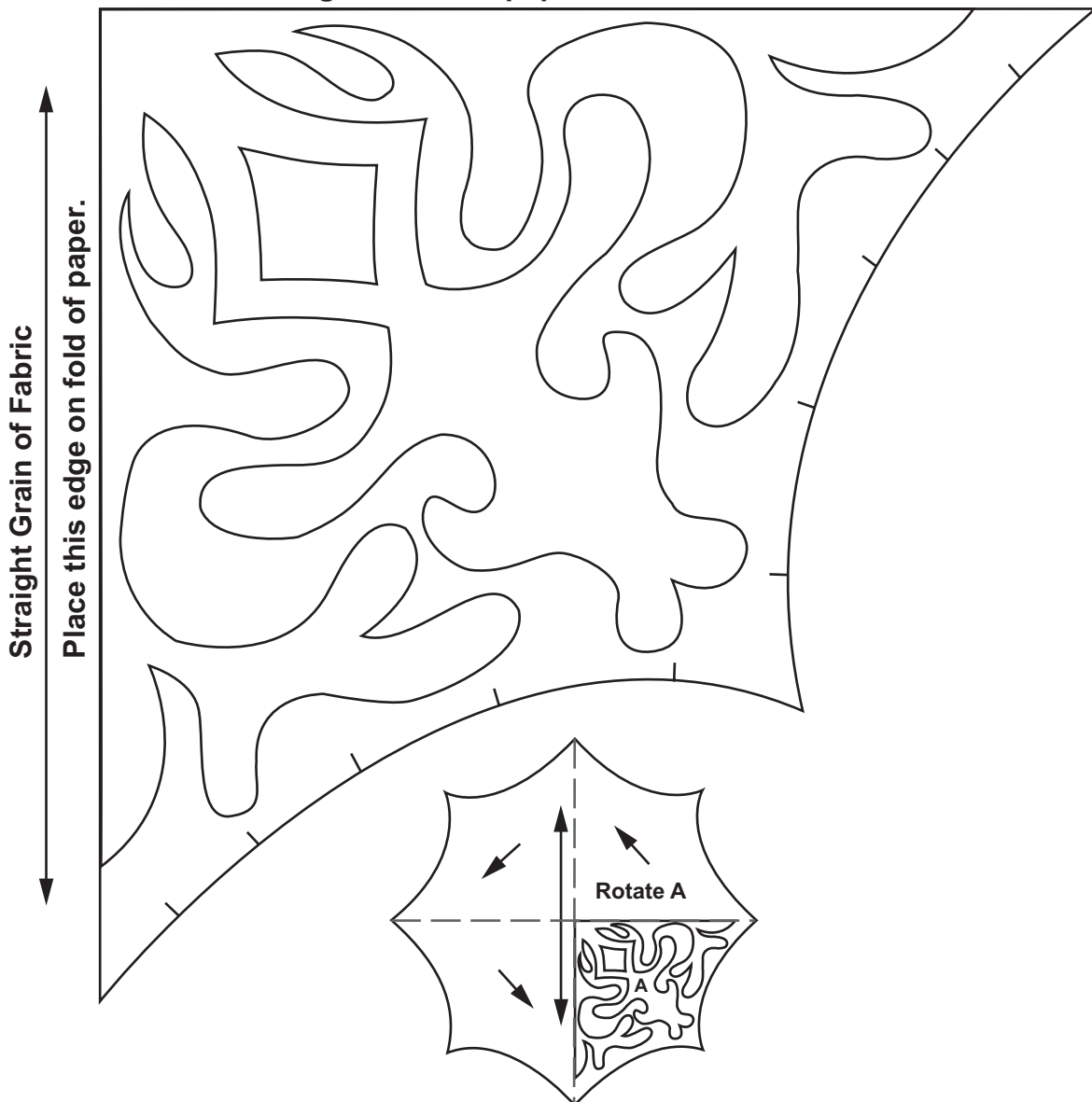
For additional copies of this pattern please call or write Red Rooster Fabrics at the address listed below.
253 West 35th Street, 11th Floor, New York, NY 10001 • 401.728.4200 • www.redroosterfabrics.com

Ricky Tims' *Rhapsodie Colorée II*

The pattern pieces 1-5 and appliqué patterns A-E are shown at $\frac{1}{2}$ their actual size. Set your copier to 200% and enlarge all pattern pieces and appliqué designs before you cut.

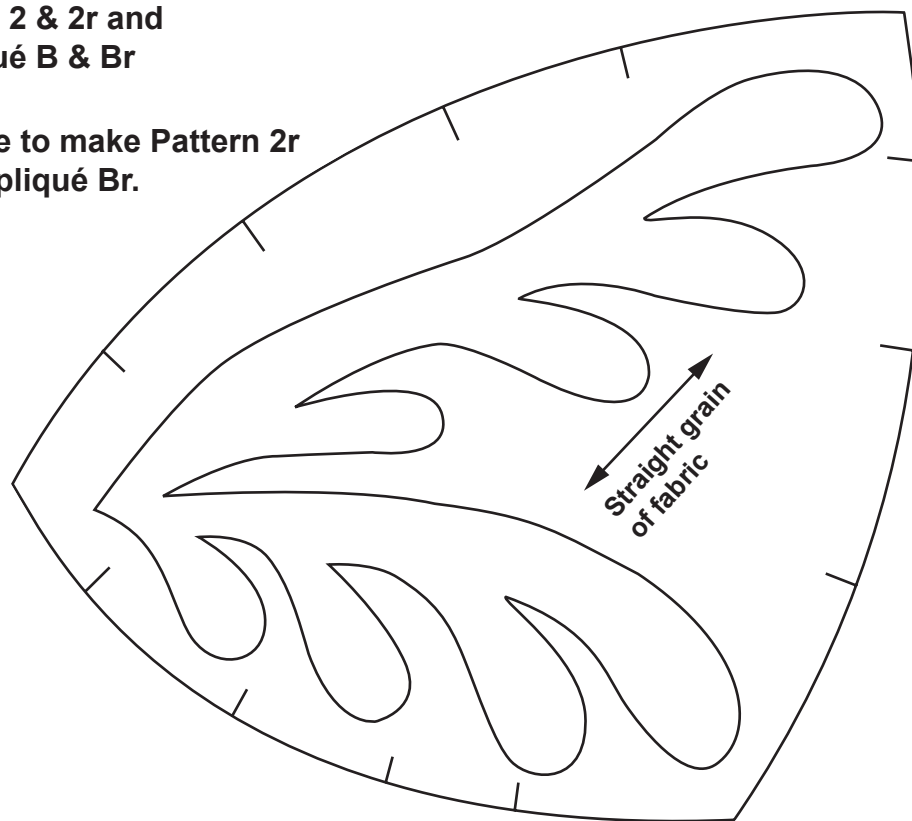
Pattern 1 and Appliqué A

Fold large square of paper in half then half again.
Place this edge on fold of paper.

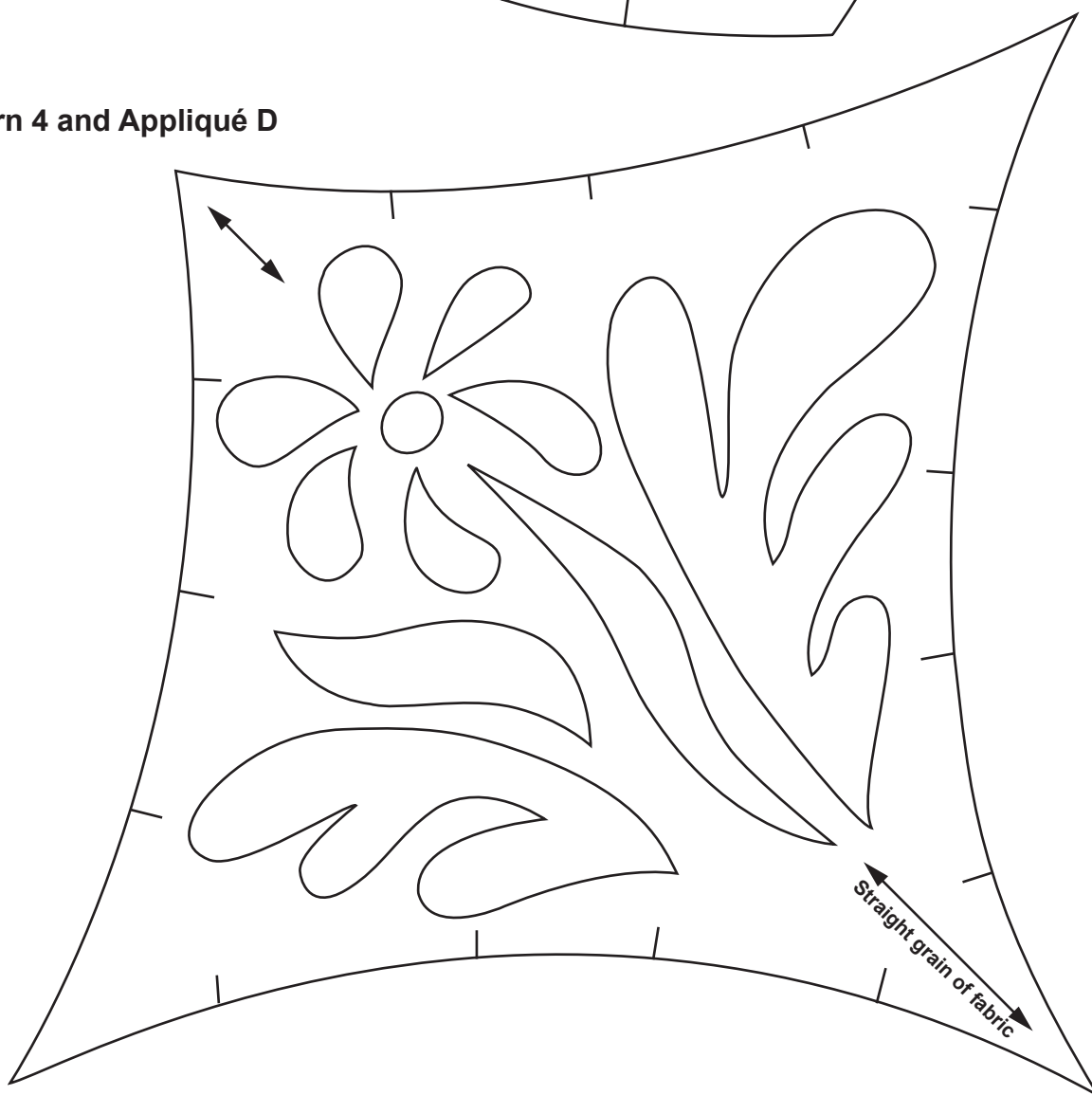


**Pattern 2 & 2r and
Appliqué B & Br**

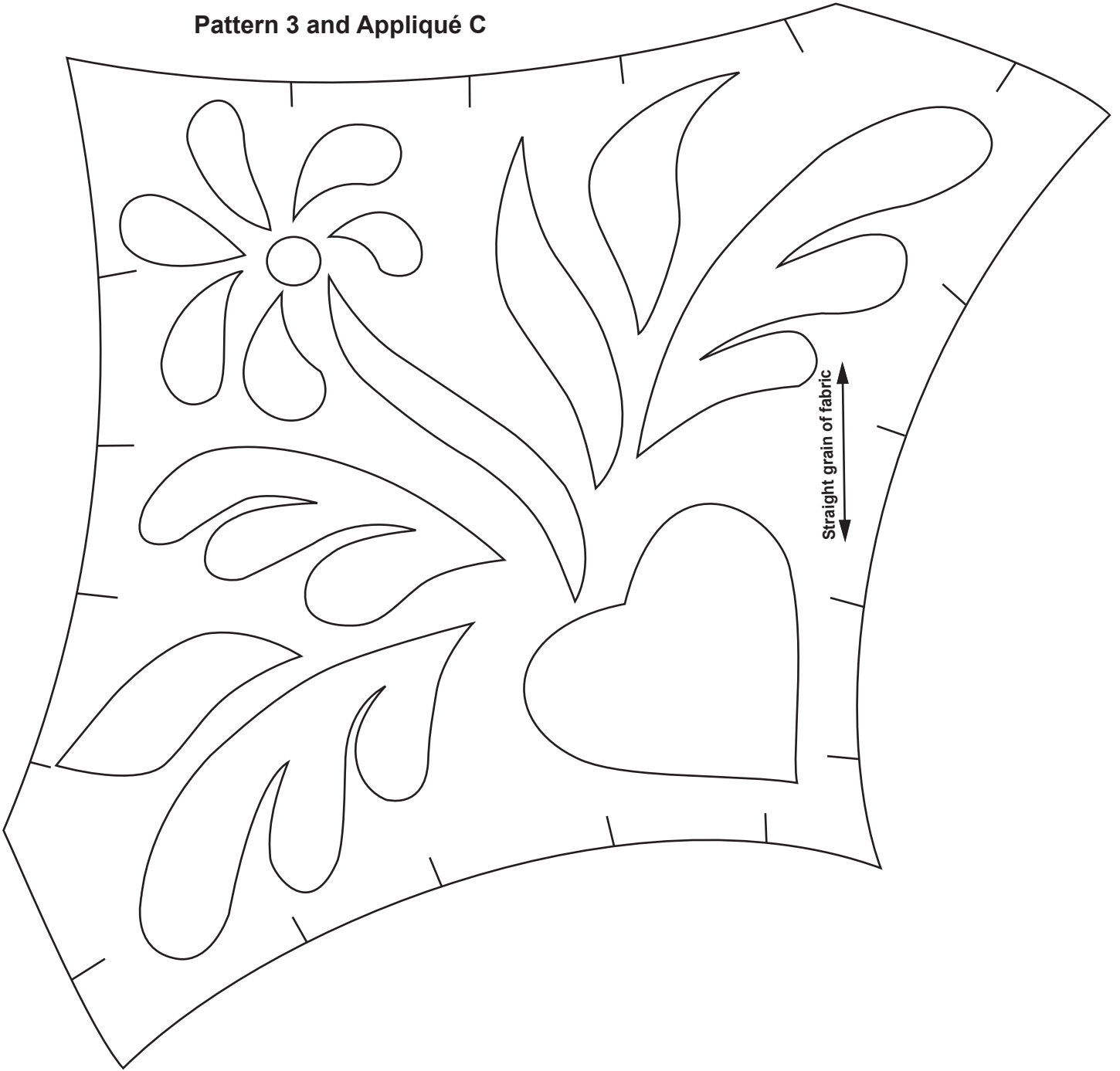
**Reverse to make Pattern 2r
and Appliqué Br.**



Pattern 4 and Appliqué D



Pattern 3 and Appliqué C



Pattern 5 and Appliqué E

Before enlarging 200%, cut both pieces out and match points A and B on each piece together. Secure with clear tape.

